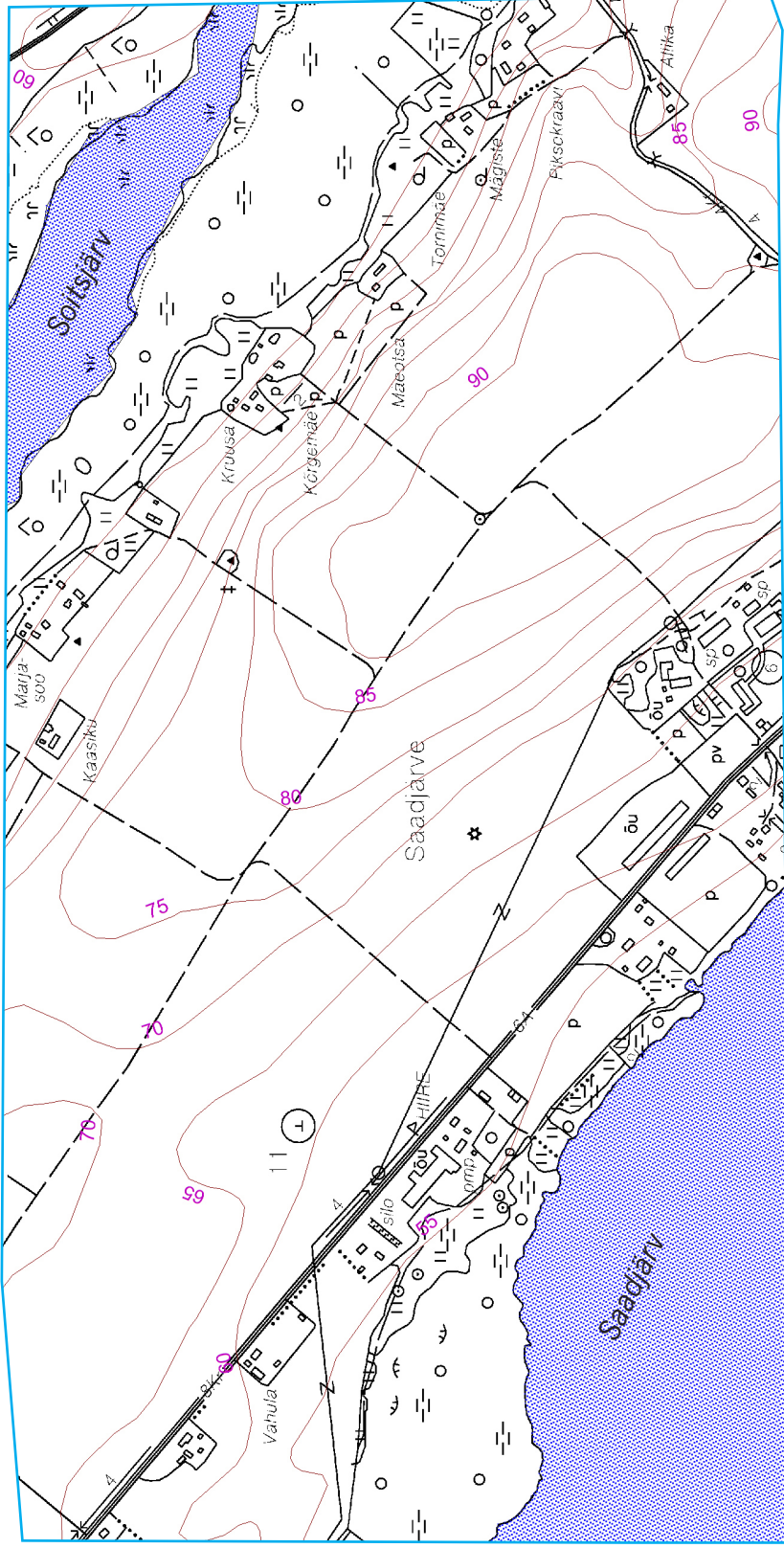

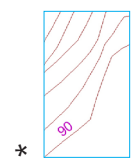



Moraine landscape




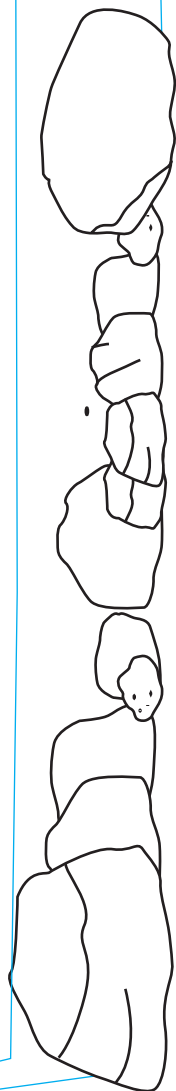
 The buildings on the map cannot be seen from the observation point. Why? Explain based on the information provided on the map.


Answer the following questions with the help of isohypses*.



 The absolute height or height above sea level of the moraine of Lake Saadjärv.


 The height of our location from the shoreline of Lake Saadjärv.



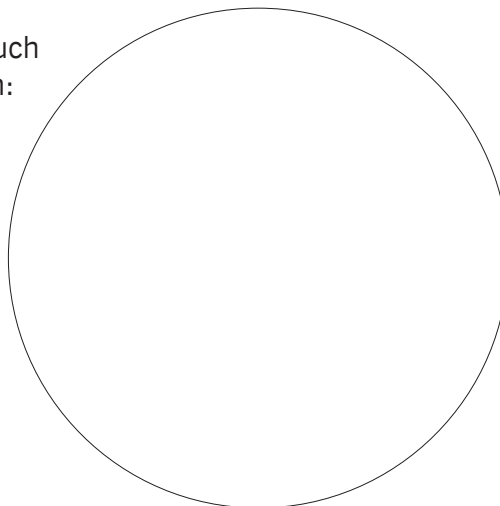
 Let us study gravel.

Which rocks did we find from the sample?

Where are the rocks from?
How did the rocks get here?

 Draw up an estimated pie chart, which shows how much of the following can be seen from the viewing platform:

- open landscape
- coniferous forest
- deciduous forest
- waterbodies
- _____



graphical symbols*

*Use any graphical symbols you like

 Write down 1–3 keywords to describe what the view looked/will look like:

| 12,000 years ago | 6,000 years ago | 3,000 years ago | 100 years ago | 100 years from now |
|------------------|-----------------|-----------------|---------------|--------------------|
| | | | | |

 The most memorable experience in the viewing platform:

